



## Early Development Centers

### Mission

To provide a nurturing, culturally diverse environment rich with developmentally appropriate activities. Our program is child-centered, play-based, and designed to encourage each child to achieve its potential.

### Goals

To give each child the opportunity to reach its full potential. Education is about opening doors, opening minds, and opening possibilities. The goal of our Early Development Centers is to “nurture every child’s potential.” Building character in our children enables them to reach their full potentials intellectually, physically, socially, and emotionally. Our curriculum is directed to nurturing the whole child in a caring environment conducive to teaching and learning.

### Objectives

Provide a warm and nurturing environment built on trust and communication.

Offer a safe place that is drug-free and violence-free.

Treat staff and students with courtesy and respect.

Encourage students’ creativity and curiosity.

Give students time to summarize and reflect.

Involve students in thinking skills that examine, relate, and evaluate all aspects of a situation or problem.

Enable students and staff to work in an environment that promotes high academic standards.

Support teachers and staff in exhibiting a genuine concern for students.

Promote the idea of students teaching their peers.

Provide a balanced and flexible curriculum.

Supply a technologically superior learning environment.

### Major Functions and Activities

Early Development Centers are strategically positioned in four locations in order to ensure availability of service to all sections of the City. All

sites offer full-week, fee-based programs, with the fee dependent upon the age of the child enrolled.

Program goals and objectives are designed to provide a flexible and creative learning environment. A child’s opportunity to learn is the primary focus.

Children enjoy activities and learning experiences geared to their developmental level, with music and art as an integral part of the program. Children also enjoy activities designed to promote math and science skills. Hands-on experience with computers and informational technology is woven into program content.

The City’s four Early Development Center locations are as follows:

- Bright Beginnings at Walter C. Young, 901 NW 129th Avenue
- Village Preschool, 6700 SW 13 Street
- Pembroke Pines Charter School - West Campus, 1600 SW 184 Avenue
- Pembroke Pines Charter School - Central Campus, 12200 Sheridan Street

### Budget Highlights

The budget for the EDCs is \$118,000 below the current working budget. This reduction is attributable mainly to the decrease in Early Development Center Fees at the Bright Beginnings site. This downward adjustment is predicated on historical average enrollment. The reduction in the revenue budget is largely responsible for the \$129,000 decrease in the budget for the transfer to the Charter Middle School.

### Accomplishments

Central Campus ~ with 100 Voluntary Prekindergarten (VPK) students (5 classes) a VPK Readiness Rate of 92 out of a possible 100 was achieved. The VPK Provider Kindergarten Readiness Rate measures how well a VPK provider prepares four-year-olds to be ready for kindergarten, based upon Florida’s VPK Education Standards. The VPK Education Standards describe what four-year-old children should know and be able to do by the end of the VPK experience. We maintained our AdvancED Southern Association of Colleges and Schools Council on Accreditation and School Improvement (SACS CASI) Accreditation. This Accreditation is only given to schools that offer the highest quality of care and education to young children. All staff completed



## Early Development Centers

professional development courses in Pediatric and Adult First Aid and VPK Education Standards.

East Campus ~ Completed the sixth year of Florida's Voluntary Prekindergarten (VPK) Program. Our Scholastic Book fair raised over \$1,500 in "Scholastic" dollars, supplying dozens of books to our classroom libraries. Staff continued to maintain credentials and in-service hours required for licensing in First Aid and CPR. Successfully opened and filled a classroom for one-year-olds and an additional VPK Classroom, increasing enrollment and revenue.

West Campus ~ Completed the third year of The VPK Program. With 6 classes of VPK students totaling 120 children, staff worked diligently to prepare them for kindergarten. A VPK readiness score of 89 was achieved. All of our staff, including office staff, renewed their First Aid and CPR course and our teachers are keeping up with the renewal of their Child Development Associate (CDA) credentials.

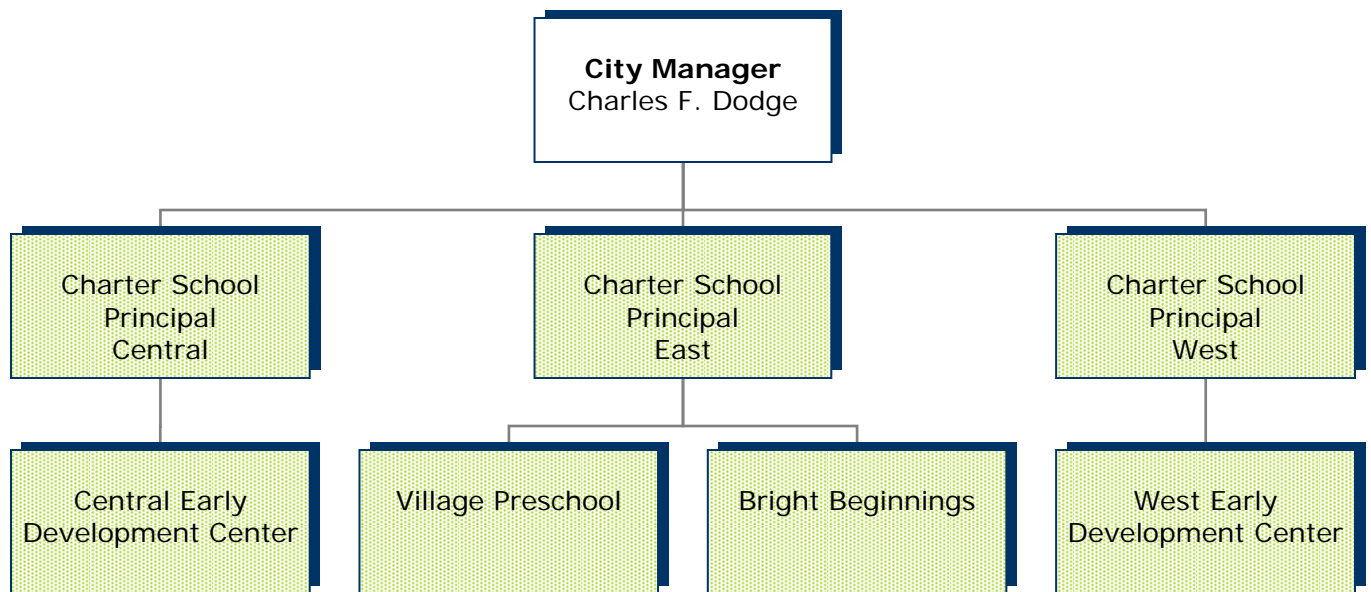
Bright Beginnings ~ Completed the fifth year of Voluntary Pre-Kindergarten (VPK).

## Early Development Centers Performance Measures

Indicator	2010-11		2011-12		2012-13	2013-14
	Actual	Goal	Actual	Goal	Goal	Goal
<b>Outputs</b>						
Number of students	684	660	703	675	674	718
<b>Effectiveness</b>						
Met state mandated student to teacher ratio of 21 to 1	Yes	Yes	Yes	Yes	Yes	Yes

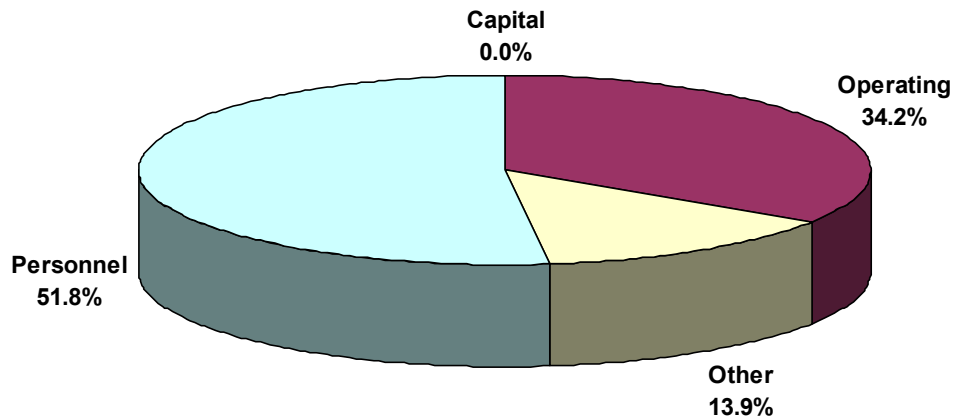
## EARLY DEVELOPMENT CENTERS

### Organizational Chart



 Shading indicates direct public service provider

## Early Development Centers - Budget Summary



Expenditure Category	2010-11 Actual	2011-12 Actual	2012-13 Budget	2013-14 Budget
Personnel				
Salary	2,323,527	2,095,193	2,305,096	2,191,439
Benefits	751,023	612,545	788,775	719,490
Personnel Subtotal	3,074,550	2,707,738	3,093,871	2,910,929
Operating				
Professional Services	1,500	-	568	225
Other Contractual Services	156,763	383,986	597,206	815,056
Travel Per Diem	2,313	345	2,790	3,550
Communication and Freight Services	6,273	4,742	7,334	8,334
Utility Services	83,914	82,001	93,100	91,800
Rentals and Leases	410,275	397,011	402,522	384,608
Repair and Maintenance Services	69,000	65,324	68,575	94,510
Other Current Charges and Obligation	73,229	95,722	115,786	106,886
Office Supplies	8,657	6,565	13,500	13,500
Operating Supplies	321,069	347,981	409,100	404,566
Publications and Memberships	-	-	450	450
Operating Subtotal	1,132,993	1,383,678	1,710,931	1,923,485
Capital				
Improvements Other Than Buildings	46,295	13,956	-	-
Machinery and Equipment	38,382	12,444	20,325	1,000
Capital Subtotal	84,677	26,400	20,325	1,000
Other				
Transfers	-	1,047,973	910,561	781,847
Other Subtotal	-	1,047,973	910,561	781,847
<b>Total</b>	<b>4,292,220</b>	<b>5,165,788</b>	<b>5,735,688</b>	<b>5,617,261</b>

### Early Development Centers - Personnel Summary

Position Title		2010-11 Actual	2011-12 Actual	2012-13 Adopted Budget	2013-14 Budget
12120 Sch Accounting Clerk II		4	2	2	2
12143 EDC Teacher		35	32	32	26
12780 Teacher Aide		18	17	17	14
12781 Site Supervisor		4	4	4	4
12972 EDC Clerical Spec I		4	3	3	3
13408 P/T EDC Clerical Spec I		-	-	-	2
13551 P/T Teacher Aide		91	92	92	94
13680 P/T Clerk Spec I		3	2	2	-
13738 P/T Custodian		1	1	-	-
Total	Full-time	65	58	58	49
	Part-time	95	95	94	96